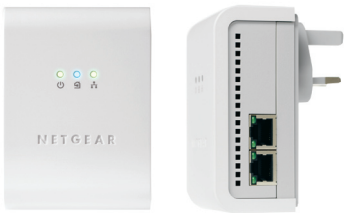


Turn Any Electrical Outlet into a Home Network Connection

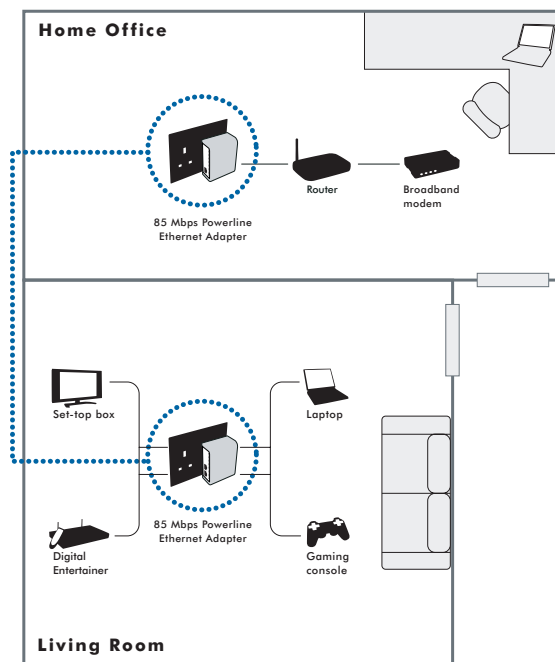


- Create 4 new Internet connections on any electrical power outlet
- Connect up to 4 devices on one outlet
- Extend your home network using existing powerlines¹
- No setup required—just plug and play!
- Connect to game consoles, PCs, DVR, network storage, etc.

Features

- Turns any electrical power outlet into 4 Ethernet network connections
- Delivers fast 85 Mbps speed¹
- For use with both wired and wireless routers and gateways
- Simply plug one Powerline Adapter into your router, and a second 4-port Powerline Adapter into as many as four networked devices¹
- Connect a desktop, notebook PC, gaming console, NETGEAR Storage Central Turbo (SC101T), Slingbox™, DVR or NETGEAR Print Server (PS121)
- Data encryption ensures privacy and security
- Supports Windows® Vista™
- HomePlug 1.0 compatible

**Plug-and-play Connection
of a Powerline network^{1, 2}**



¹ Uses NETGEAR XE104, XE103, XEPS103, XE102, WGXB102 or other HomePlug 1.0 compatible Powerline device.

² XEB1004 is compatible with NETGEAR's XE104, XEPS103, XE103, XE102, and WGXB102 products. XEB1004 is not compatible nor interoperable with NETGEAR's HDX101 or HDX111, however it may coexist on the same network.



Extend your home network

NETGEAR's 85 Mbps Powerline Ethernet Switch Kit (XEB1004) is a convenient solution for extending your home network by using standard electrical outlets. This kit delivers the devices you need to set up an Internet connection in any room without running new wires. The XEB1004 connects multiple devices to your network:

- Game Consoles
- Desktop PCs
- Notebook PCs
- Storage Central
- Slingbox™
- Internet Routers

System Requirements

- For device connection: Available RJ-45 Ethernet port
- To enable encryption: Windows® Vista™, XP, 2000

Network Ports

- 4 10/100 Mbps Ethernet ports
- One 85 Mbps PowerLine port

PowerLine Standards

- HomePlug 1.0 compatible

Power Supply

- 100-240V @ 50-60 Hz

LEDs

- Unit: Power
- PowerLine: Link
- Ethernet: Link/Activity

Environmental Specifications

- Operating temperature: 0 - 40° C (32 - 104° F)
- Operating relative humidity: 10% to 90% non-condensing

Electromagnetic Emissions

- FCC Part 15 Class B

Power and Safety Regulations

- UL Certified

Typical Coverage

- Up to 5000 square foot home

Warranty

- NETGEAR 1-year warranty

Package Contents

- Two (2) 85 Mbps Powerline Ethernet Adapters
- 1.52 m (5 ft) Ethernet cable
- Installation guide
- Setup CD
- Warranty card
- Support and information card

NETGEAR Related Products**Network**

- RangeMax Wireless-N Cable Router (WNR834B)
- RangeMax Wireless Cable Router (WPN824)
- Super-G® Wireless Firewall Router (WGT624)
- Wireless-G Cable Router (WGR614)
- RangeMax Wireless Access Point (WPN802)
- Open Source Wireless-G Router (KWGR614)
- 8-Port Gigabit Desktop Switch (GS608)
- 5-Port Gigabit Desktop Switch (GS605)
- ProSafe® 5-Port Gigabit Desktop Switch (GS105)
- ProSafe® VPN Firewall 8 w/8-Port 10/100 Mbps Switch (FVS318)

- ProSafe® 802.11 Wireless Access Point (WG102)
- 85 Mbps Powerline Network Switch (XE104)
- 85 Mbps Powerline Network Adapter (XE103)
- 14 Mbps Powerline Network Adapter (XE102)
- Space-Saving Powerline Network Extender (XEPS103)
- 14 Mbps Powerline Wireless Range Extender (WGXB102)

Printer

- USB Print Server (PS121)
- 54 Mbps Wireless USB Print Server (WGPS606)

Storage

- Storage Central Turbo (SC101T)

Multimedia Player

- Digital Entertainer HD (EVA8000) Player

NETGEAR®

4500 Great America Parkway
Santa Clara, CA 95054 USA
1-888-NETGEAR (638-4327)
E-mail: info@NETGEAR.com
www.NETGEAR.com

© 2008 NETGEAR, Inc., the NETGEAR logo, Connect with Innovation, Everybody's connecting, FrontView, the Gear Guy logo, IntelliFi, ProSafe, ReadyNAS, RAIDar, RAIDiator, X-RAID, and Smart Wizard are trademarks of NETGEAR, Inc. and/or its subsidiaries in the United States and/or other countries. Microsoft and Windows are trademarks of Microsoft Corporation in the United States and/or other countries. Other brand and product names are trademarks or registered trademarks of their respective holders. Information is subject to change without notice. All rights reserved.

This product has been tested for quality assurance and this product or its components may have been recycled.

Outlets must be electrically connected in order for Powerline devices to provide a network connection between them.

†Actual data throughput will vary. Network conditions and environmental factors, including volume of network traffic, building material and construction, and network overhead, lower actual data throughput rate.

*Free basic installation support provided for 90 days from date of purchase. Advanced product features and configurations are not included in free basic installation support; optional premium support available.

D-XEB1004-0